

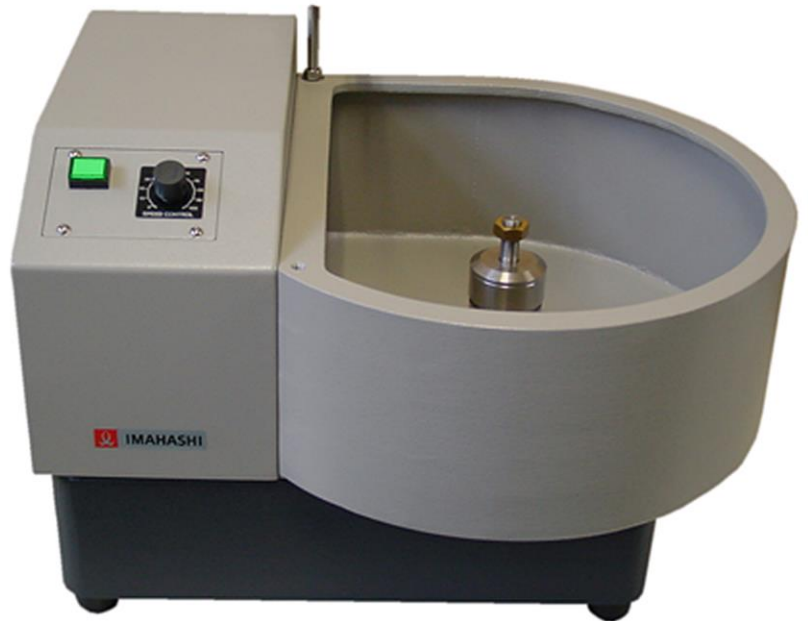
# LAPPING UNIT

MODEL FAC-8IRS

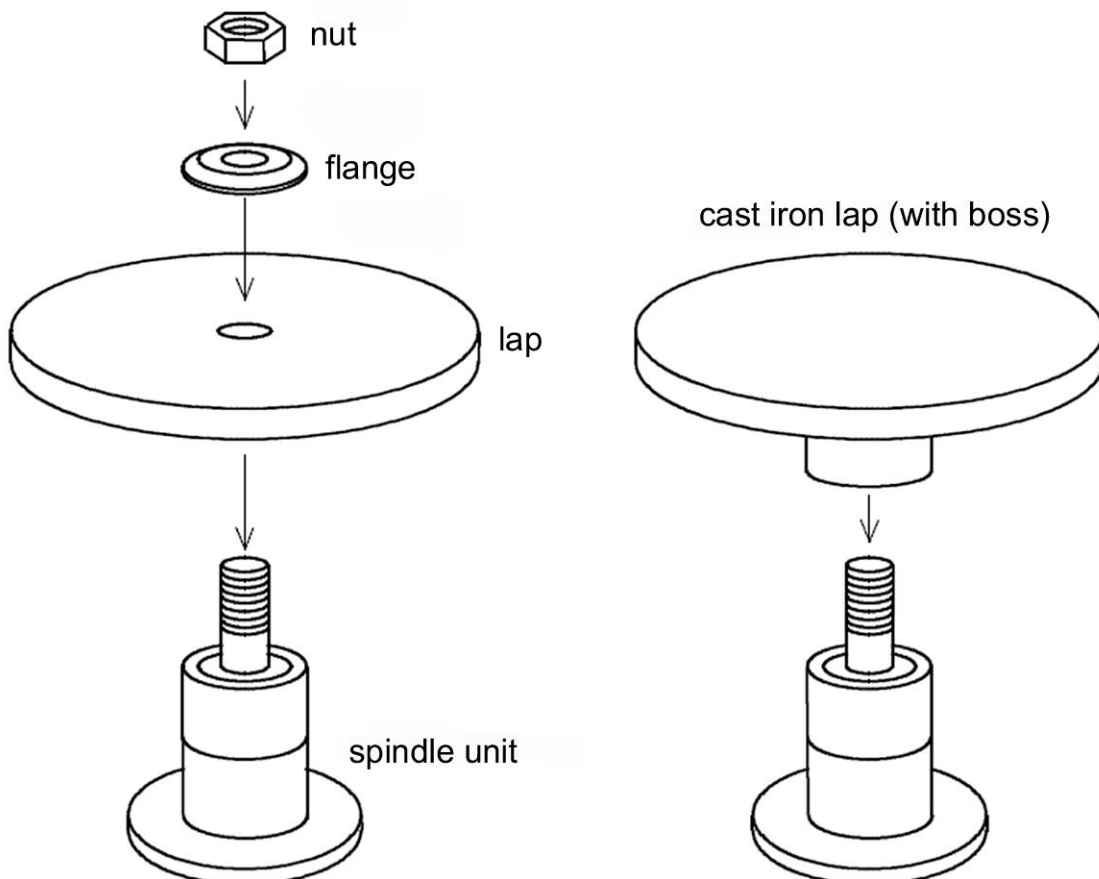
This machine is multipurpose simple machine for forming and lapping of gemstone such as crystal and agete, optical glass, ceramic and sample work and other brittle materials.

The spindle part is made of stainless steel. The rotation speed is variable by inverter of 200W motor.

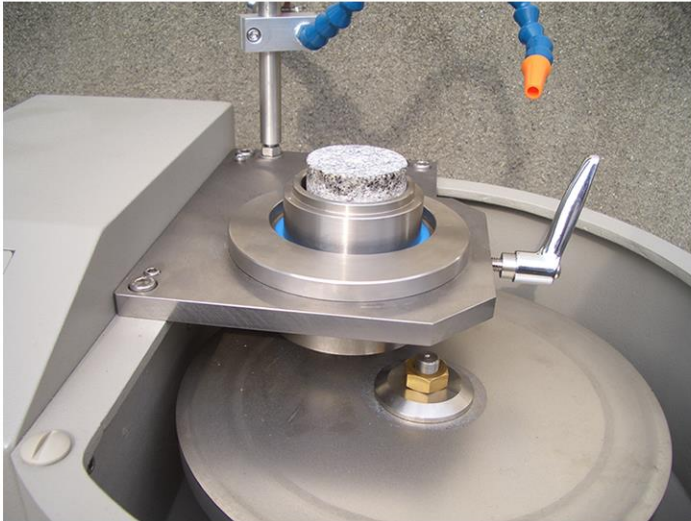
Lap is usually  $\Phi 200\text{mm}$ , but maximum diemter is up to  $\Phi 250\text{mm}$ .



 Installation of lap



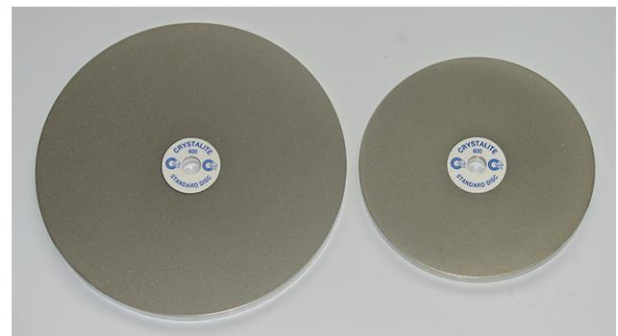
■ Remodeled concrete sample's end face lapping



■ Please feel free to contact us about any special specifications.

**【Optional accessory】**

- Electrodeposited diamond discs
  - Φ200 x 12.7H mm #260
  - Φ200 x 12.7H mm #360
  - Φ200 x 12.7Hmm #600
  - Φ200 x 12.7Hmm #1200
- Cast iron laps
  - Φ200 x 10T x 12.7Hmm
  - Φ200 (with boss)



Electrodeposited diamond discs

**SPECIFICATIONS**

**FAC-8IRS**

Machine size (width x depth x height)	.....	490W x 390D x 325H mm
Main spindle rotation speed	.....	0-1650 r.p.m.
Lapping plate's outer diameter	.....	150-250 mm
Motor	.....	200 W
Power	.....	Single phase, 100V
Net weight	.....	Approx.25 Kg

Specification subject to change without notice.1406272

 **IMAHASHI MFG CO., LTD.**

Head office & Factory Postal code 400-0862

3-10-5 Asake, Kofu-shi, Yamanashi-ken, Japan

Phone:+81 055 232 3143 Fax:+81 055 232 3149

Email: kofu@imahashi.net

Tokyo office

Postal code 184-8533

In KOGANEI Co., Ltd 3-11-28 Midori-cho, Koganei-shi, Tokyo